

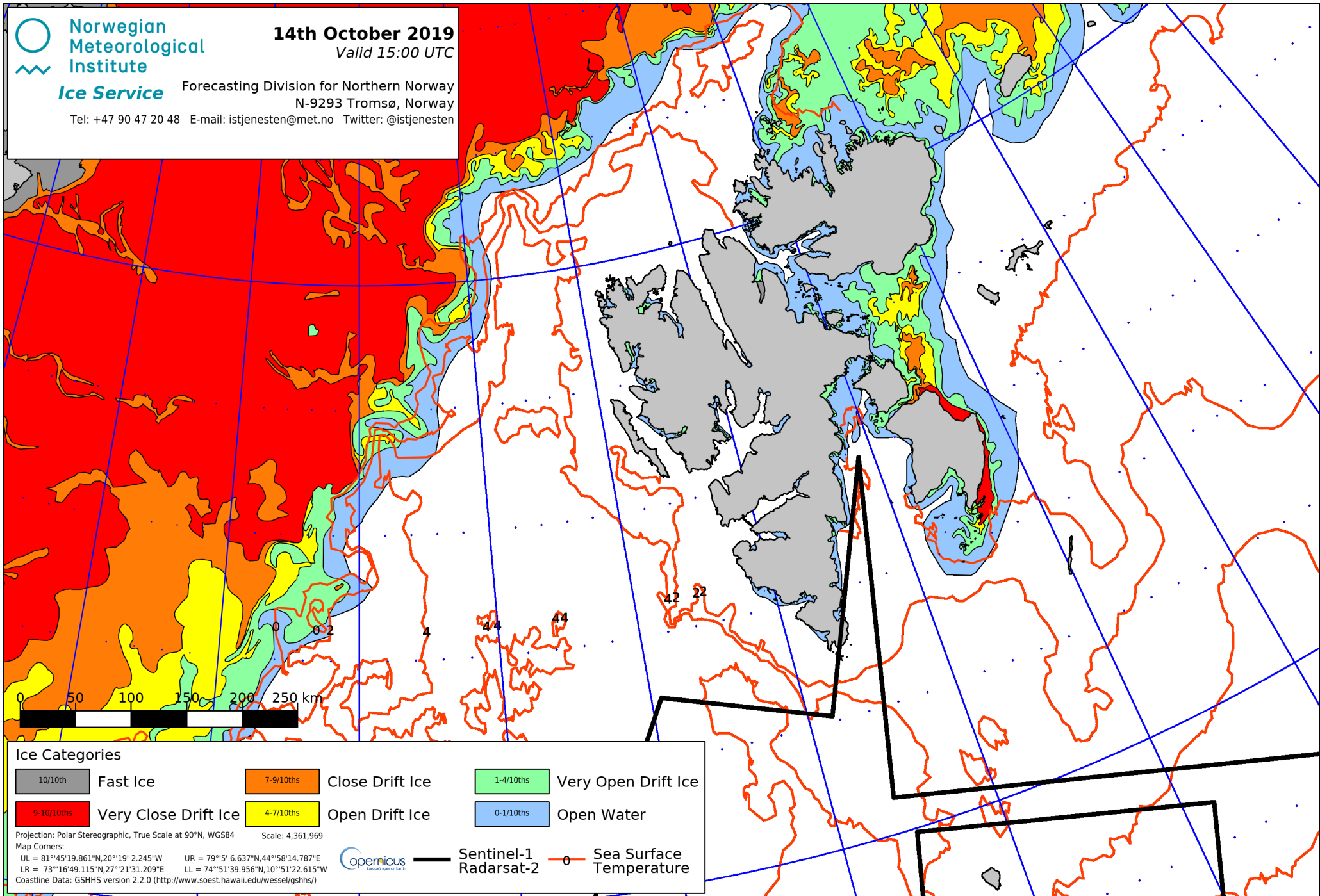


Norwegian  
Meteorological  
Institute  
**Ice Service**

**14th October 2019**  
Valid 15:00 UTC

Forecasting Division for Northern Norway  
N-9293 Tromsø, Norway

Tel: +47 90 47 20 48 E-mail: istjenesten@met.no Twitter: @istjenesten



**Ice Categories**

|            |                      |           |                 |           |                     |
|------------|----------------------|-----------|-----------------|-----------|---------------------|
| 10/10ths   | Fast Ice             | 7-9/10ths | Close Drift Ice | 1-4/10ths | Very Open Drift Ice |
| 9-10/10ths | Very Close Drift Ice | 4-7/10ths | Open Drift Ice  | 0-1/10ths | Open Water          |

Projection: Polar Stereographic, True Scale at 90°N, WGS84 Scale: 4,361,969  
 Map Corners:  
 UL = 81°45'19.861"N, 20°19' 2.245"W UR = 79°5' 6.637"N, 44°58'14.787"E  
 LR = 73°16'49.115"N, 27°21'31.209"E LL = 74°51'39.956"N, 10°51'22.615"W  
 Coastline Data: GSHHS version 2.2.0 (<http://www.soest.hawaii.edu/wessel/gshhs/>)



Sea Surface Temperature