



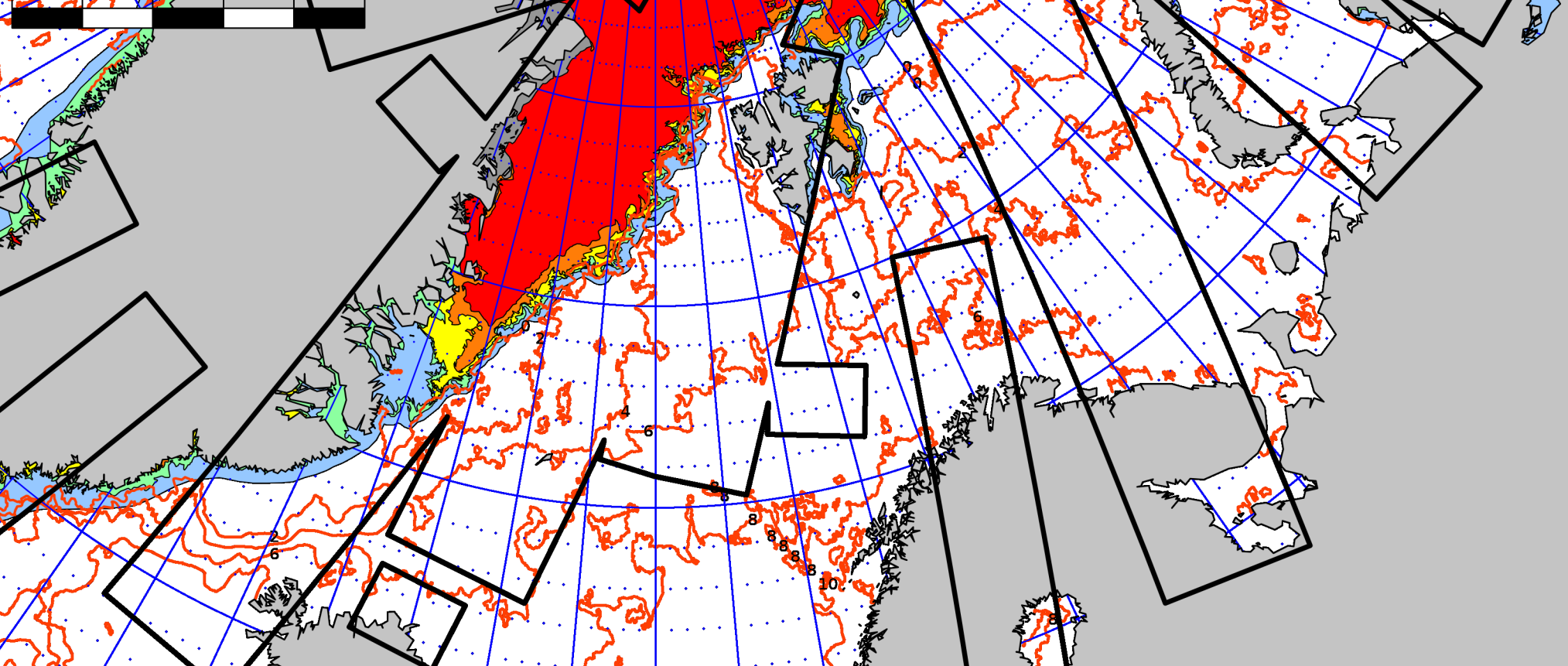
**Norwegian
Meteorological
Institute**
Ice Service

17th October 2019
Valid 15:00 UTC

Forecasting Division for Northern Norway
N-9293 Tromsø, Norway

Tel: +47 90 47 20 48 E-mail: istjenesten@met.no Twitter: @istjenesten

0 200 400 600 800 1000 km



Ice Categories

| | | | | | |
|------------|----------------------|-----------|-----------------|-----------|---------------------|
| 10/10th | Fast Ice | 7-9/10ths | Close Drift Ice | 1-4/10ths | Very Open Drift Ice |
| 9-10/10ths | Very Close Drift Ice | 4-7/10ths | Open Drift Ice | 0-1/10ths | Open Water |

Projection: Polar Stereographic, True Scale at 90°N, WGS84 Scale: 16,580,902

Map Corners:

UL = 73°10'50.572"N, 83°55'51.534"W UR = 66°46'32.424"N, 85°38'11.481"E
LR = 53°45'33.028"N, 38°47'58.682"E LL = 57°11'35.748"N, 29°59' 8.321"W

Coastline Data: GSHHS version 2.2.0 (<http://www.soest.hawaii.edu/wessel/gshhs/>)

