



Norwegian  
Meteorological  
Institute

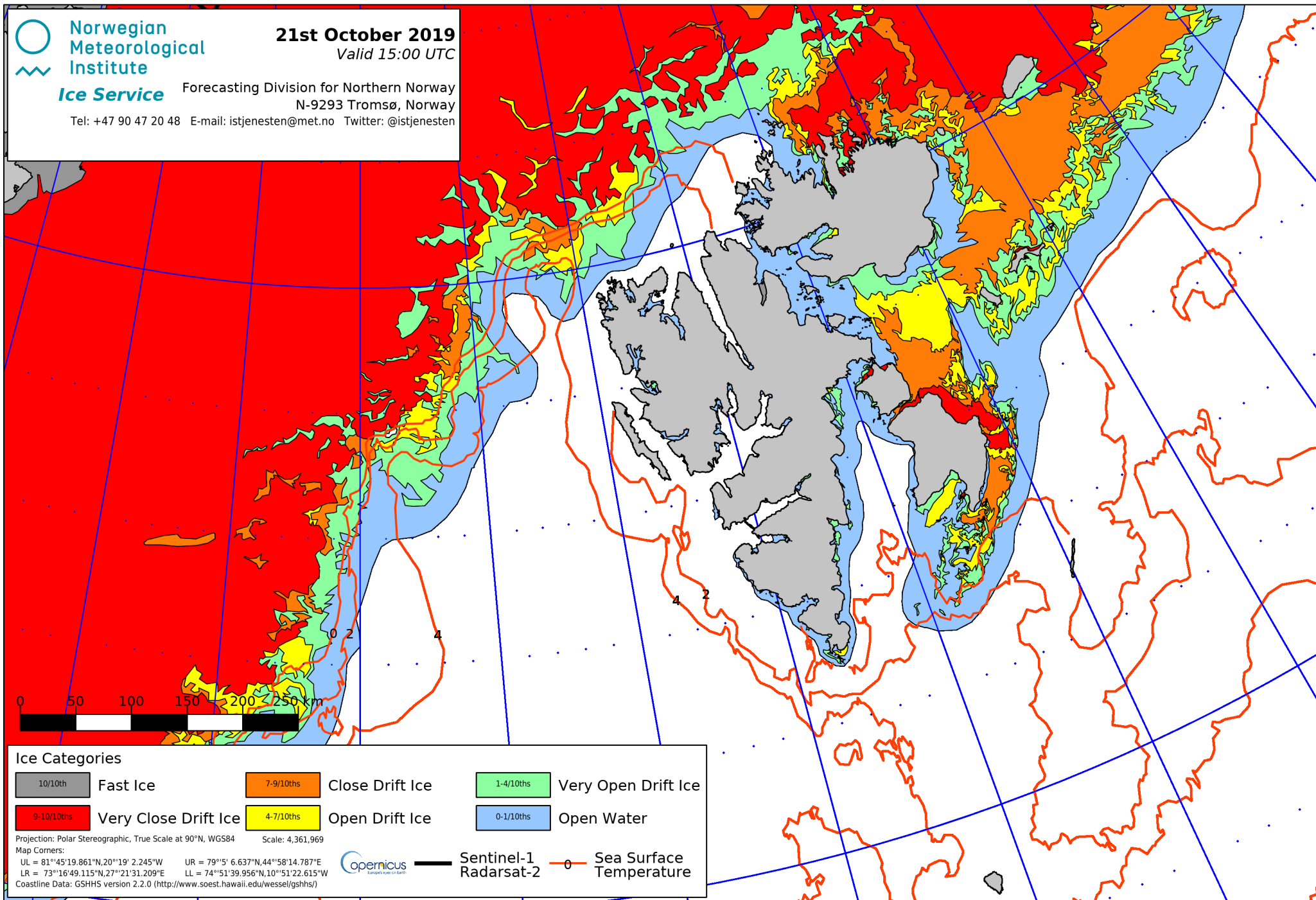
**Ice Service**

Forecasting Division for Northern Norway  
N-9293 Tromsø, Norway

Tel: +47 90 47 20 48 E-mail: [istjenesten@met.no](mailto:istjenesten@met.no) Twitter: @istjenesten

**21st October 2019**

Valid 15:00 UTC



**Ice Categories**

10/10ths	Fast Ice	7-9/10ths	Close Drift Ice	1-4/10ths	Very Open Drift Ice
9-10/10ths	Very Close Drift Ice	4-7/10ths	Open Drift Ice	0-1/10ths	Open Water

Projection: Polar Stereographic, True Scale at 90°N, WGS84 Scale: 4,361,969

Map Corners:

UL = 81°45'19.861"N, 20°19' 2.245"W UR = 79°5' 6.637"N, 44°58'14.787"E  
LR = 73°16'49.115"N, 27°21'31.209"E LL = 74°51'39.956"N, 10°51'22.615"W

Coastline Data: GSHHS version 2.2.0 (<http://www.soest.hawaii.edu/wessel/gshhs/>)



Sea Surface Temperature