



Norwegian  
Meteorological  
Institute

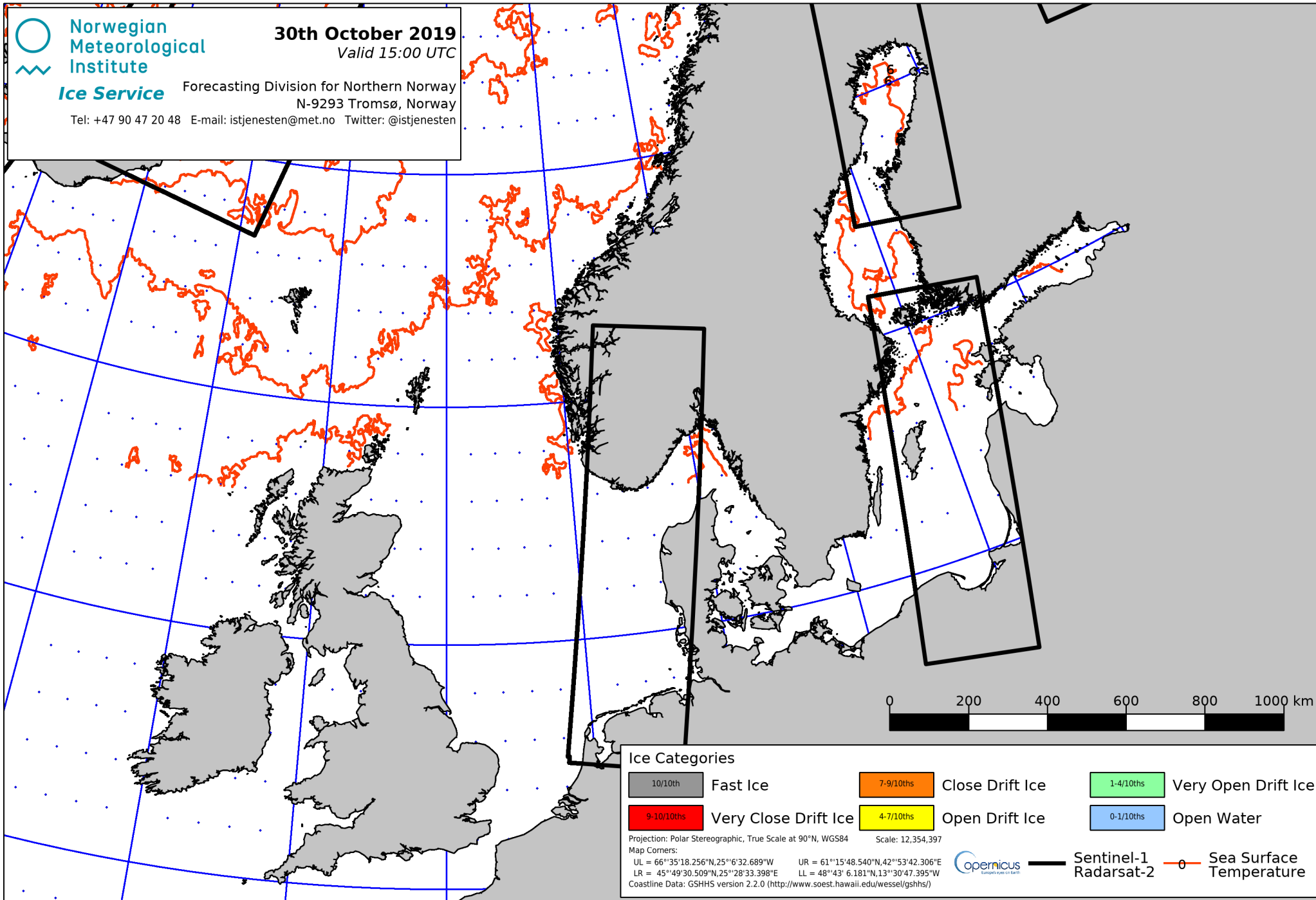
**Ice Service**

Forecasting Division for Northern Norway  
N-9293 Tromsø, Norway

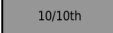
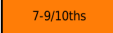
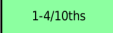
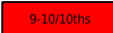
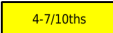
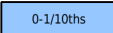
Tel: +47 90 47 20 48 E-mail: [istjenesten@met.no](mailto:istjenesten@met.no) Twitter: @istjenesten

**30th October 2019**

Valid 15:00 UTC



**Ice Categories**

 10/10th	Fast Ice	 7-9/10ths	Close Drift Ice	 1-4/10ths	Very Open Drift Ice
 9-10/10ths	Very Close Drift Ice	 4-7/10ths	Open Drift Ice	 0-1/10ths	Open Water

Projection: Polar Stereographic, True Scale at 90°N, WGS84 Scale: 12,354,397  
 Map Corners:  
 UL = 66°35'18.256"N, 25°6'32.689"W UR = 61°15'48.540"N, 42°53'42.306"E  
 LR = 45°49'30.509"N, 25°28'33.398"E LL = 48°43' 6.181"N, 13°30'47.395"W  
 Coastline Data: GSJHS version 2.2.0 (<http://www.soest.hawaii.edu/wessel/gshhs/>)



Sentinel-1  
Radarsat-2

 Sea Surface Temperature