



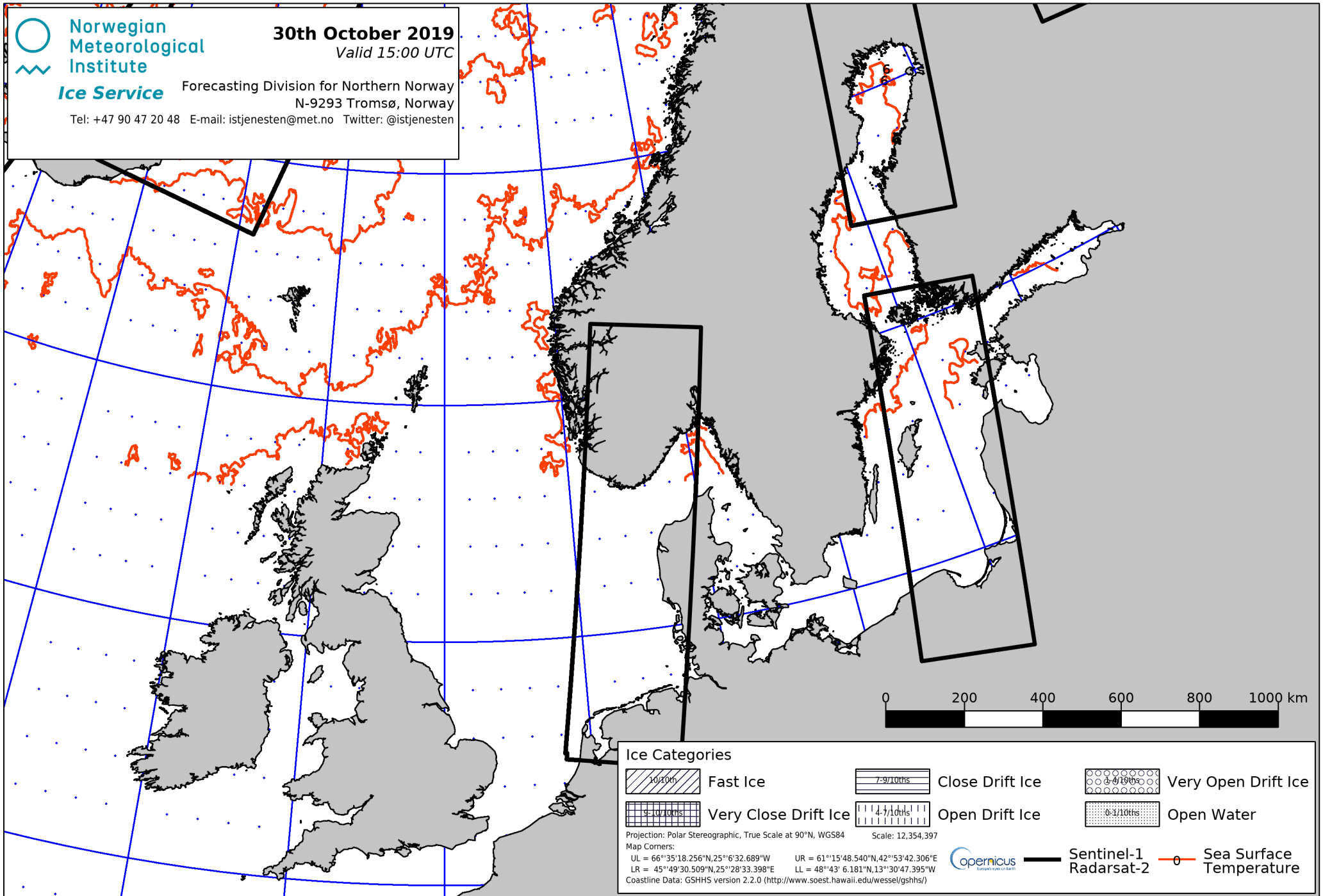
**Norwegian
Meteorological
Institute**
Ice Service

Forecasting Division for Northern Norway
N-9293 Tromsø, Norway

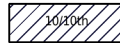
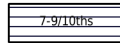

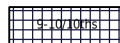
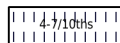
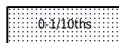
Tel: +47 90 47 20 48 E-mail: istjenesten@met.no Twitter: @istjenesten

30th October 2019

Valid 15:00 UTC



Ice Categories

- | | | |
|---|--|--|
|  Fast Ice |  Close Drift Ice |  Very Open Drift Ice |
|  Very Close Drift Ice |  Open Drift Ice |  Open Water |

Projection: Polar Stereographic, True Scale at 90°N, WGS84 Scale: 12,354,397
 Map Corners:
 UL = 66°35'18.256"N, 25°6'32.689"W UR = 61°15'48.540"N, 42°53'42.306"E
 LR = 45°49'30.509"N, 25°28'33.398"E LL = 48°43' 6.181"N, 13°30'47.395"W
 Coastline Data: GSHHS version 2.2.0 (<http://www.soest.hawaii.edu/wessel/gshhs/>)



Sentinel-1
Radarsat-2

Sea Surface Temperature