



Norwegian
Meteorological
Institute

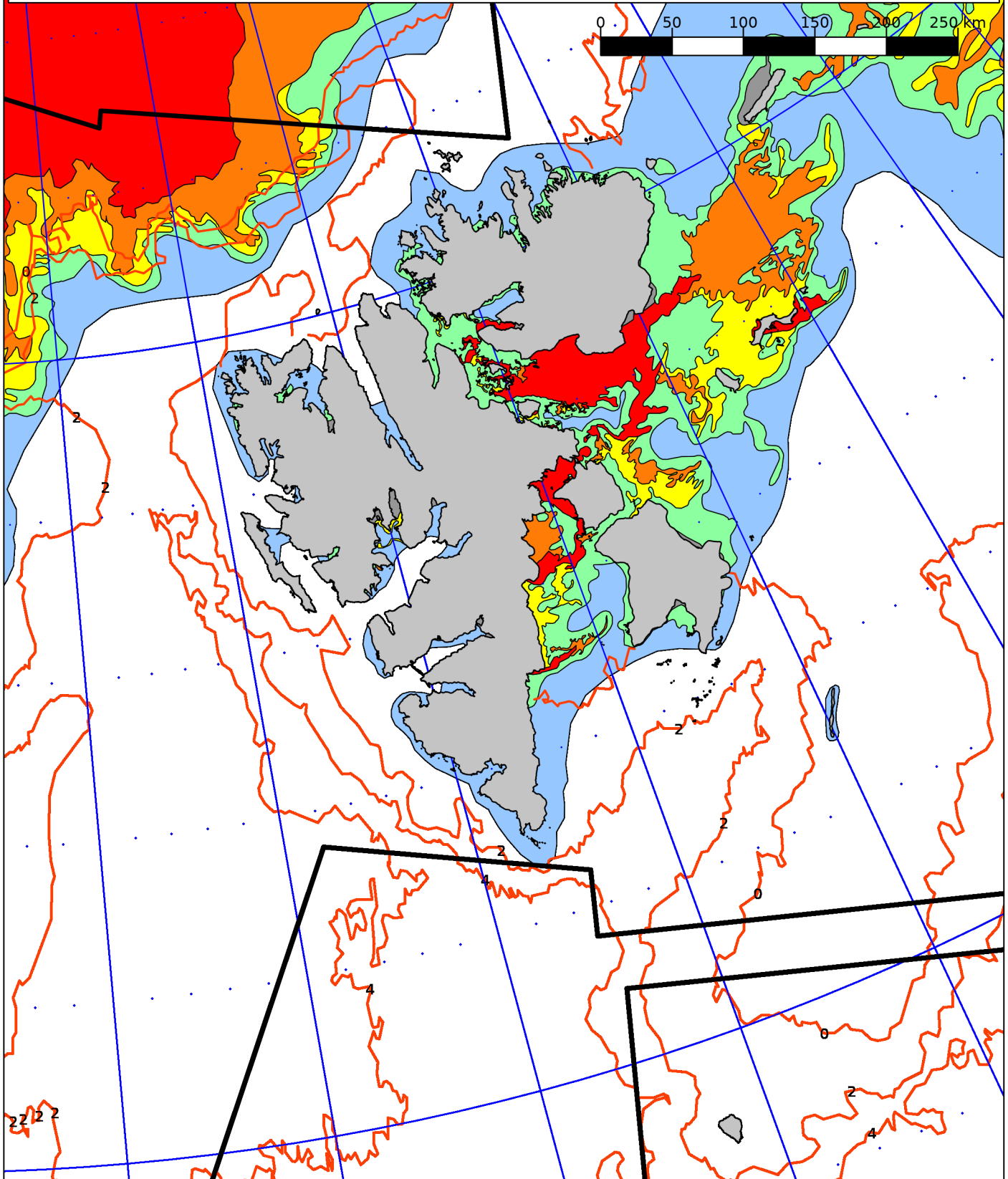
Ice Service

6th January 2021

Valid 15:00 UTC

Forecasting Division for Northern Norway, N-9293 Tromsø, Norway

Tel: +47 90 47 20 48 E-mail: istjenesten@met.no Twitter: @istjenesten



Ice Categories

10/10ths	Fast Ice	7-9/10ths	Close Drift Ice	1-4/10ths	Very Open Drift Ice
9-10/10ths	Very Close Drift Ice	4-7/10ths	Open Drift Ice	0-1/10ths	Open Water

Projection: Polar Stereographic, True Scale at 90°N, WGS84 Scale: 3,792,530

Map Corners:

UL = 82°59'26.367"N, 4°23'24.258"E UR = 80°15'44.998"N, 44°11'58.041"E
 LR = 72°32'49.391"N, 22°45'57.155"E LL = 73°52'48.561"N, 1°53'51.282"E



Sentinel-1
Radarsat-2

Sea Surface
Temperature

Coastline Data: GSHHS version 2.2.0 (<http://www.soest.hawaii.edu/wessel/gshhs/>)