



Norwegian
Meteorological
Institute

19th January 2021

Valid 15:00 UTC

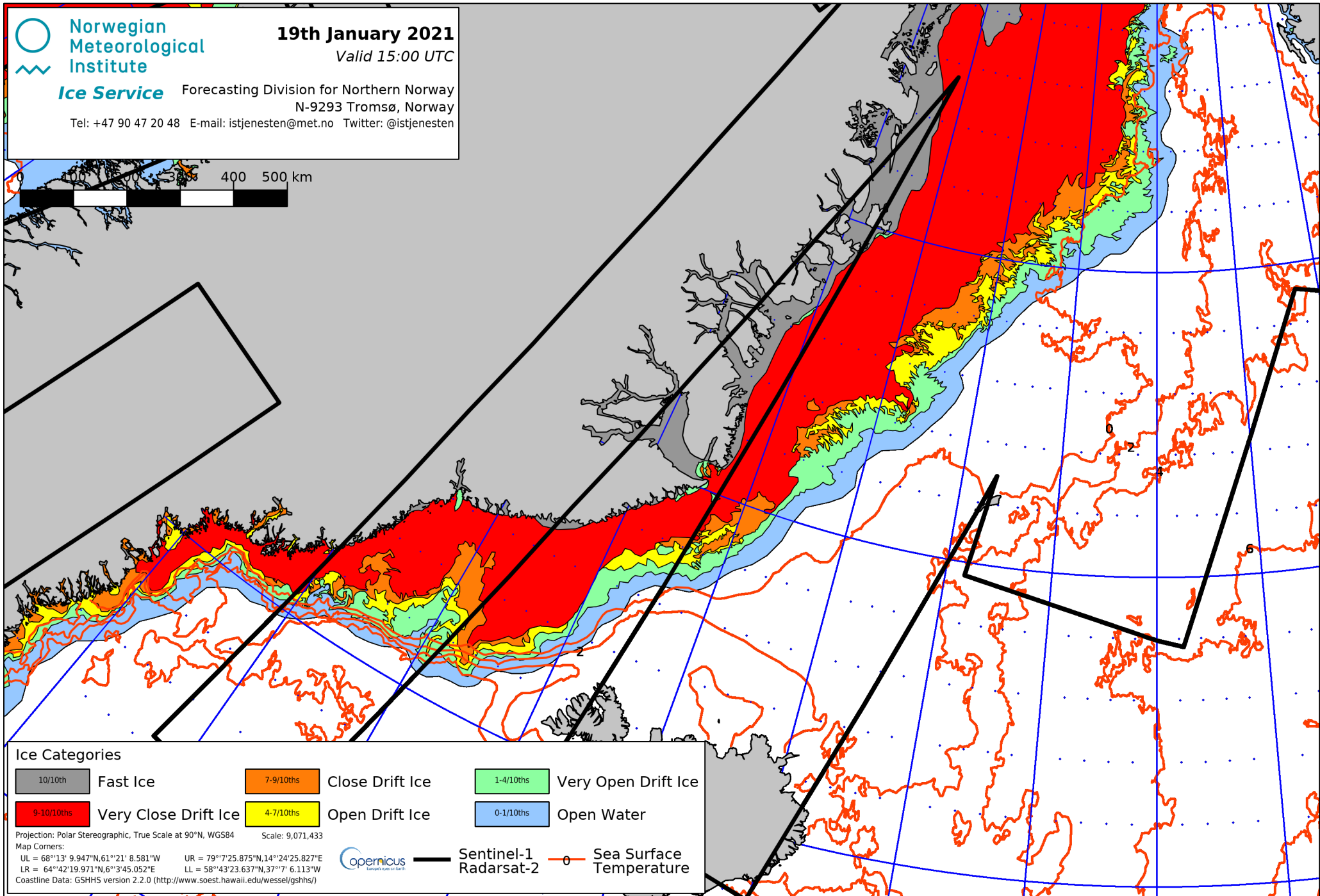
Ice Service

Forecasting Division for Northern Norway

N-9293 Tromsø, Norway

Tel: +47 90 47 20 48 E-mail: istjenesten@met.no Twitter: @istjenesten

400 500 km



Ice Categories

10/10ths	Fast Ice	7-9/10ths	Close Drift Ice	1-4/10ths	Very Open Drift Ice
9-10/10ths	Very Close Drift Ice	4-7/10ths	Open Drift Ice	0-1/10ths	Open Water

Projection: Polar Stereographic, True Scale at 90°N, WGS84 Scale: 9,071,433

Map Corners:

UL = 68°13' 9.947"N, 61°21' 8.581"W UR = 79°7'25.875"N, 14°24'25.827"E
LR = 64°42'19.971"N, 6°3'45.052"E LL = 58°43'23.637"N, 37°7' 6.113"W

Coastline Data: GSHHS version 2.2.0 (<http://www.soest.hawaii.edu/wessel/gshhs/>)



Sentinel-1
Radarsat-2

Sea Surface
Temperature