



Norwegian
Meteorological
Institute

26th January 2021

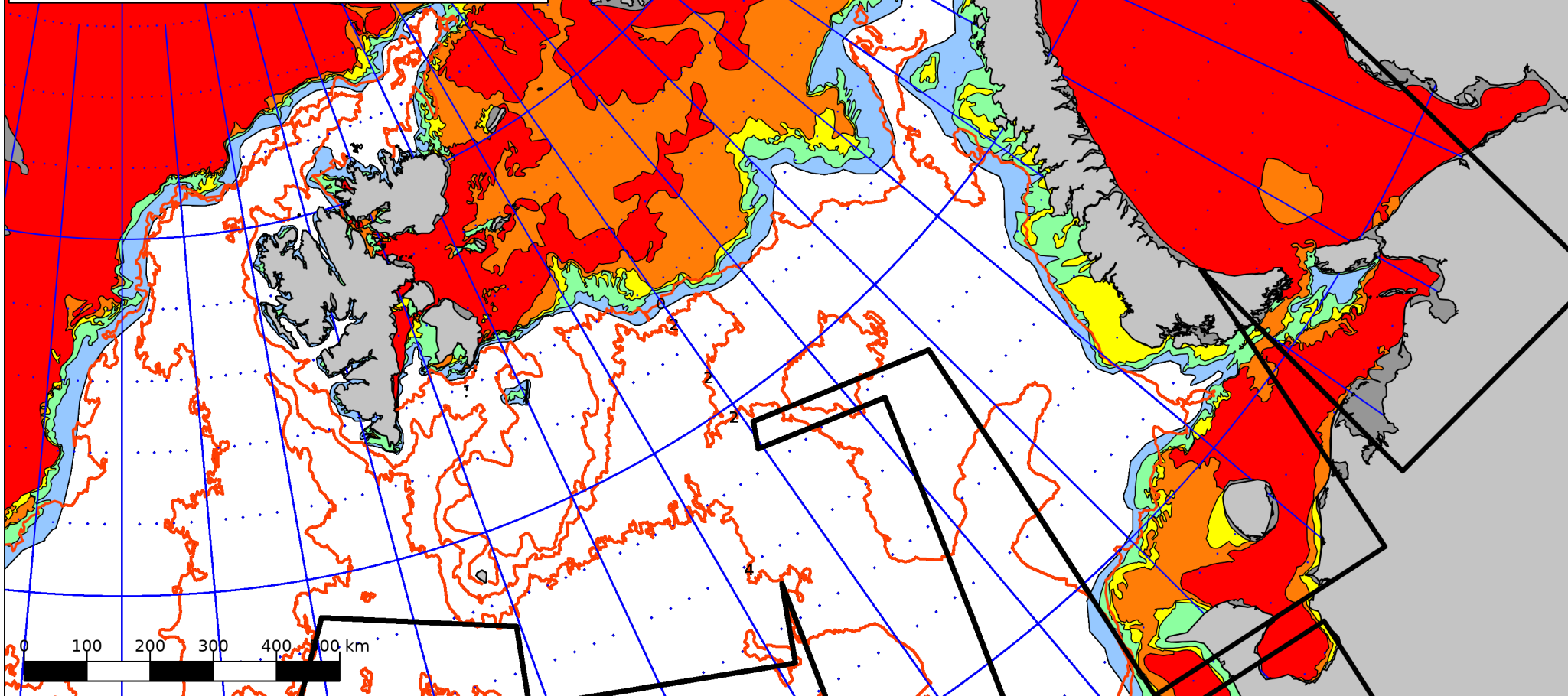
Valid 15:00 UTC

Ice Service

Forecasting Division for Northern Norway

N-9293 Tromsø, Norway

Tel: +47 90 47 20 48 E-mail: istjenesten@met.no Twitter: @istjenesten



Ice Categories

10/10ths	Fast Ice	7-9/10ths	Close Drift Ice	1-4/10ths	Very Open Drift Ice
9-10/10ths	Very Close Drift Ice	4-7/10ths	Open Drift Ice	0-1/10ths	Open Water

Projection: Polar Stereographic, True Scale at 90°N, WGS84 Scale: 9,157,425

Map Corners:

UL = 85°38'27.370"N, 22°30'30.866"W UR = 69°14'18.848"N, 78°55'47.338"E

LR = 62°23'53.257"N, 47°3'49.930"E LL = 70°56'18.875"N, 4°58'48.187"W

Coastline Data: GSHHS version 2.2.0 (<http://www.soest.hawaii.edu/wessel/gshhs/>)



Sea Surface Temperature