



Norwegian
Meteorological
Institute

28th January 2021

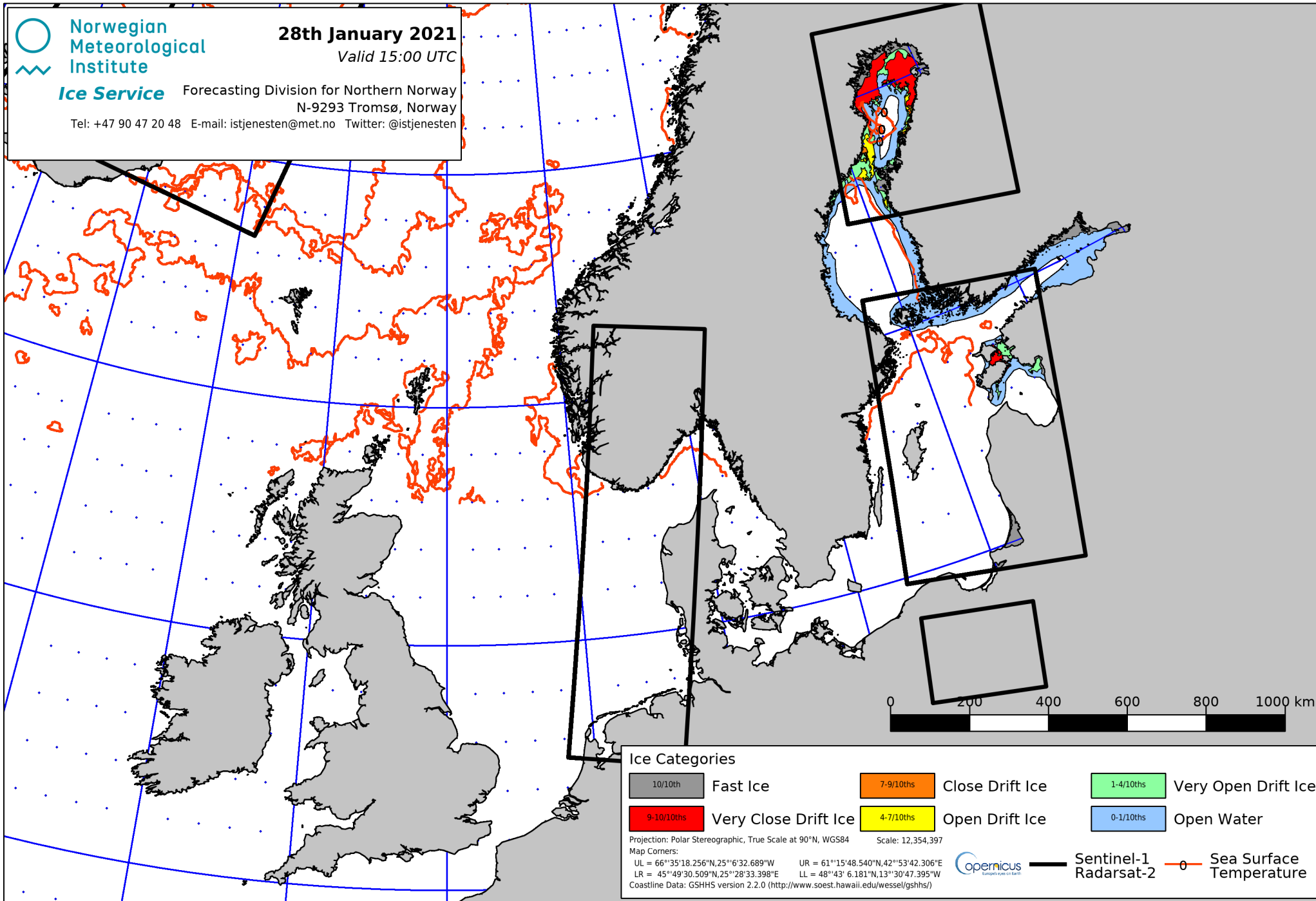
Valid 15:00 UTC

Ice Service

Forecasting Division for Northern Norway

N-9293 Tromsø, Norway

Tel: +47 90 47 20 48 E-mail: istjenesten@met.no Twitter: @istjenesten



Ice Categories

10/10ths	Fast Ice	7-9/10ths	Close Drift Ice	1-4/10ths	Very Open Drift Ice
9-10/10ths	Very Close Drift Ice	4-7/10ths	Open Drift Ice	0-1/10ths	Open Water

Projection: Polar Stereographic, True Scale at 90°N, WGS84 Scale: 12,354,397
 Map Corners:
 UL = 66°35'18.256"N, 25°6'32.689"W UR = 61°15'48.540"N, 42°53'42.306"E
 LR = 45°49'30.509"N, 25°28'33.398"E LL = 48°43' 6.181"N, 13°30'47.395"W
 Coastline Data: GSCHS version 2.2.0 (<http://www.soest.hawaii.edu/wessel/gshhs/>)



Sentinel-1
Radarsat-2

Sea Surface
Temperature