



Norwegian  
Meteorological  
Institute

28th January 2021

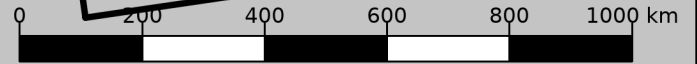
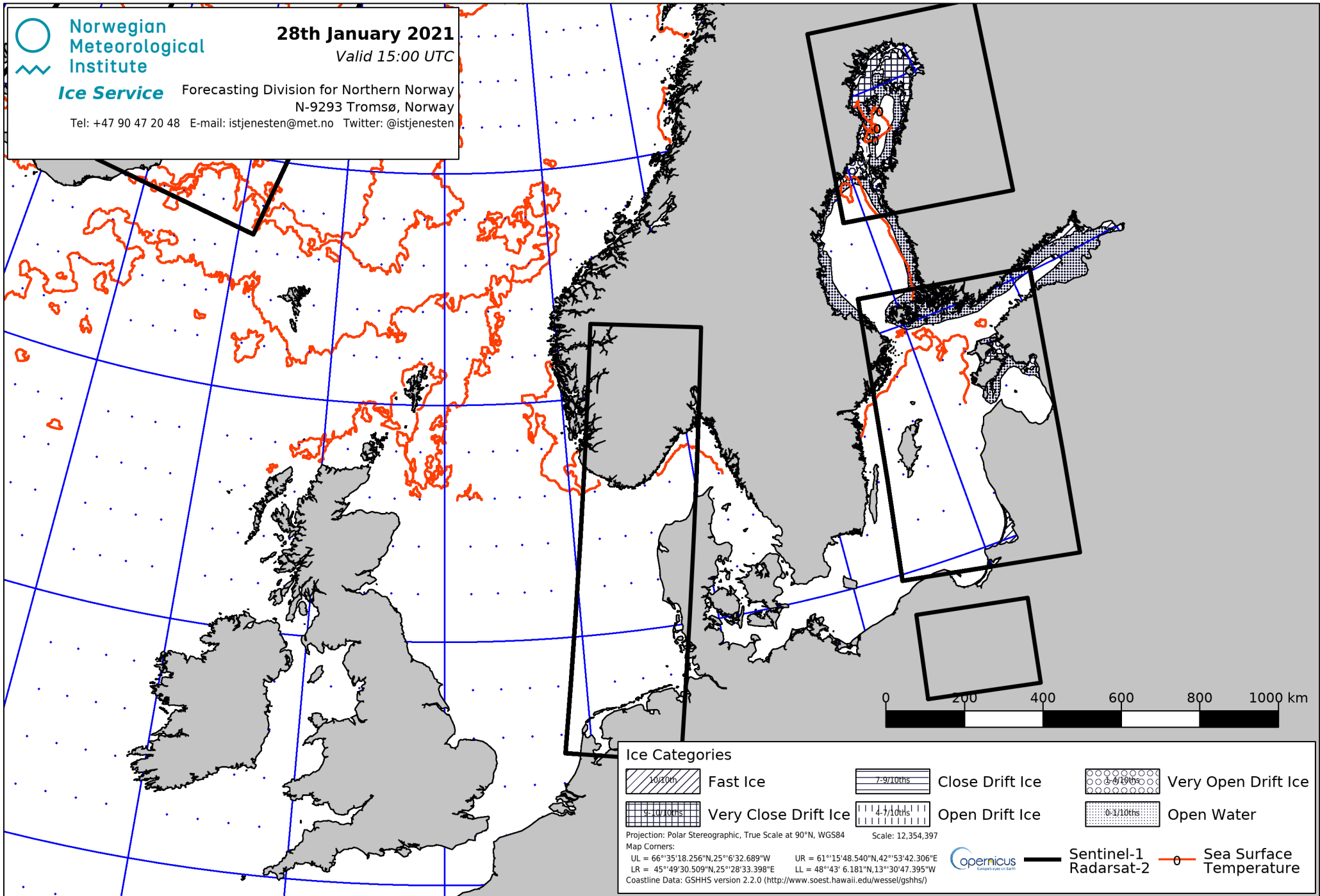
Valid 15:00 UTC

Ice Service

Forecasting Division for Northern Norway

N-9293 Tromsø, Norway

Tel: +47 90 47 20 48 E-mail: [istjenesten@met.no](mailto:istjenesten@met.no) Twitter: @istjenesten



Ice Categories

- |  |                      |  |                 |  |                     |
|--|----------------------|--|-----------------|--|---------------------|
|  | Fast Ice             |  | Close Drift Ice |  | Very Open Drift Ice |
|  | Very Close Drift Ice |  | Open Drift Ice  |  | Open Water          |

Projection: Polar Stereographic, True Scale at 90°N, WGS84 Scale: 12,354,397  
 Map Corners:  
 UL = 66°35'18.256"N, 25°6'32.689"W UR = 61°15'48.540"N, 42°53'42.306"E  
 LR = 45°49'30.509"N, 25°28'33.398"E LL = 48°43' 6.181"N, 13°30'47.395"W  
 Coastline Data: GSJHS version 2.2.0 (<http://www.soest.hawaii.edu/wessel/gshhs/>)



Sentinel-1  
Radarsat-2

Sea Surface  
Temperature